

# DRP10 SERIES



## 10A REDUNDANT MODULE

### FEATURES

- SUITABLE FOR REDUNDANT OPERATION OF 12V / 24V SYSTEM MAX 10A
- 3 YEARS WARRANTY



## SPECIFICATION

All Specifications Typical At Nominal Line, Full Load, 25°C Unless Otherwise Noticed

### GENERAL

Characteristics	Conditions	min.	typ.	max.	unit
Ambient temperature	Operating at Vi nom	-40		+ 71	°C
Storage temperature	Non operational	-40		+ 85	°C
Relative humidity	Vi nom, Io nom	20		95	% RH
MTBF	Bellcore Issue 6 @40°C, GB		9,697,000		Hours
Altitude during operation	IEC 60068-2-13			4,850	m
Dimension		L91 x W35 x D56.5			mm
Cooling	Free air convection				
Installation position	Vertical ( other direction may derating using )				

### INPUT SPECIFICATIONS

Characteristics	Conditions	min.	typ.	max.	unit
Rated input voltage	Io nom	9		35	VDC
Number of inputs			2		
Rated input current	Continuous			10	A
Maximum input current	Per channel			8A for 300 sec.	

### OUTPUT SPECIFICATIONS

Characteristics	Conditions	min.	typ.	max.	unit
Output voltage drop	Vi - Vout		0.5		V
Rated output current	Vi nom			10	A
Reverse voltage (max)				35	V
Maximum output current	Vi nom			16A for 300 sec.	

### APPROVALS AND STANDARDS

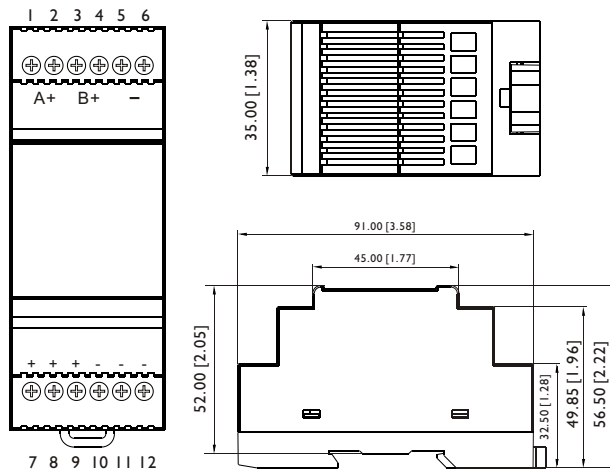
CE	EN 55022 Class B, EN 55024 EN 61000-4-2, EN 61000-4-3, EN 61000-4-4, EN 61000-4-6, EN 61000-4-8 ENV 50204, EN 61204-3
LVD	EN 60950-1
Vibration resistance	meet IEC 60068-2-6 (Mounting by rail : 10-500 Hz, 2G, along X, Y, Z each Axis, 60 min for each Axis )
Shock resistance	meet IEC 60068-2-27 (15G, 11ms, 3 Axis, 6 Faces, 3 times for each Face)

## PHYSICAL CHARACTERISTICS

Screw terminal type	91 x 35 x 56.5 mm (3.58 x 1.38 x 2.22 inches)
Case material	Plastic
Weight	75g
Packing	0.13kg ; 80pcs / 12kg / 1.82CUFT

## MECHANISM & PIN CONFIGURATION

mm [inch]



### CONSTRUCTION

Easy snap-on mounting onto the DIN-Rail (TS35/7.5 or TS35/15), unit sits safely and firmly on the rail.

### INSTALLATION

Ventilation / Cooling  
 Normal convection  
 All sides 25mm free space  
 For cooling recommended  
 Connector size range  
 AWG24-12 (0.2~2.5mm<sup>2</sup>) flexible / solid cable, connector can withstand torque at maximum 6 pound-inches.  
 7 m/m stripping at cable end recommends  
 Use copper conductors only, 60 / 75°C

GENERAL TOLERANCE	
0.00[0.00] - 30.00[1.18]	±0.30[0.01]
30.00[1.18] - 120.00[4.72]	±0.50[0.02]

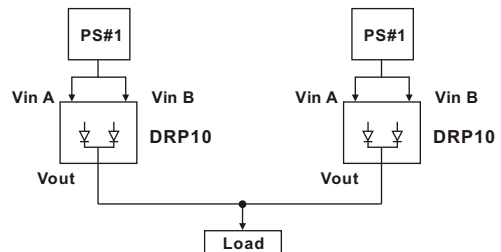
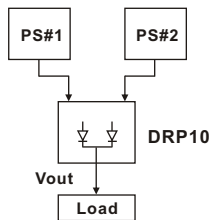
## PIN ASSIGNMENT

PIN NO.	Designation	Description
1, 2	IN	A+
3, 4		B+
5, 6		-
7, 8, 9	OUT	+
10, 11, 12		-

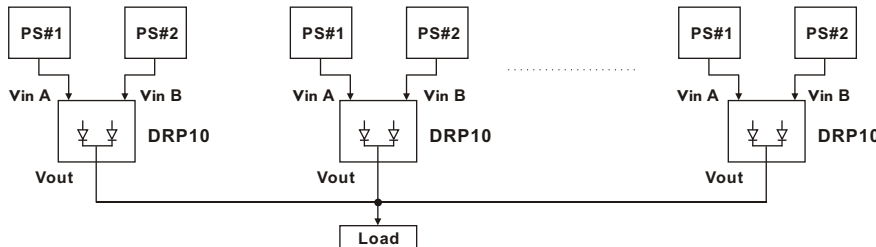
## TYPICAL APPLICATION NOTES

1.) I+I Redundancy : Using I more PS as the redundant unit.

2.) Single Use : Connecting only one PS to one DRP10 to reduce the stress of the diodes and hence increase the reliability.



3.) I+N Redundancy : Using I more PS as the redundant units to increase the reliability.



## CIRCUIT SCHEMATIC

